

Introduction



Getting Started

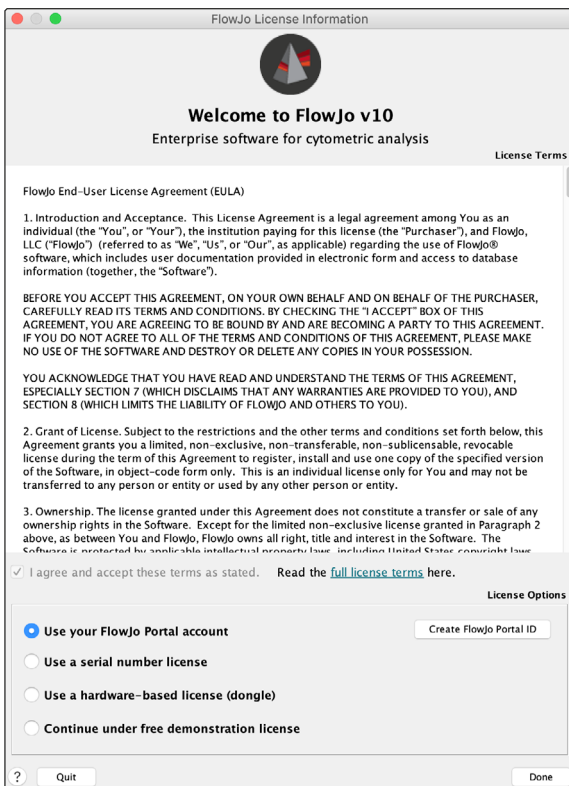
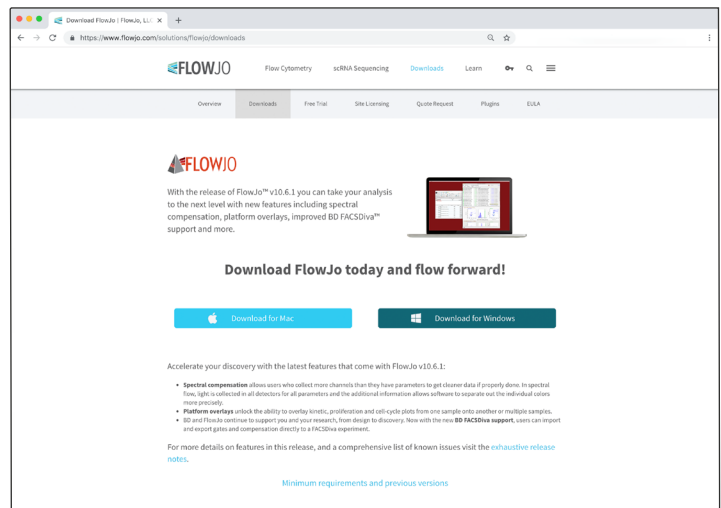
To get started using FlowJo™ v10, you will first need to install the software. You can download the current installer on our website at:

[flowjo.com/solutions/flowjo/downloads](https://www.flowjo.com/solutions/flowjo/downloads)

Select your platform (Mac/PC) at the bottom of the page.

For a PC, download the installer.exe file and open it to install the program. Choose to place a shortcut on the desktop, and when the installer finishes, double-click on the FlowJo shortcut icon to launch the program.

For a Mac, download the installer.zip file and double-click it to extract the program. Once the ZIP file is extracted, drag the FlowJo icon into your Applications folder as shown. Open your Applications folder and double click the FlowJo icon to launch.



When you launch FlowJo for the first time, the FlowJo license information window will appear. You must select the type of license that you have and agree to the license terms.

For the purpose of running our tutorials, select **Continue under free demonstration** license, accept the **EULA**, and click **Done**.

For more information about licenses, visit:

[flowjo.com/solutions/flowjo](https://www.flowjo.com/solutions/flowjo)

FlowJo Portal is our user-based licensing system for FlowJo annual subscriptions. Once you create your FlowJo Portal account and activate your subscription, you can sign in to FlowJo anywhere, at any computer—no dongle or hardware address required.

For more information about FlowJo Portal, visit:


[flowjo.com/learn/flowjoportal](https://www.flowjo.com/learn/flowjoportal)

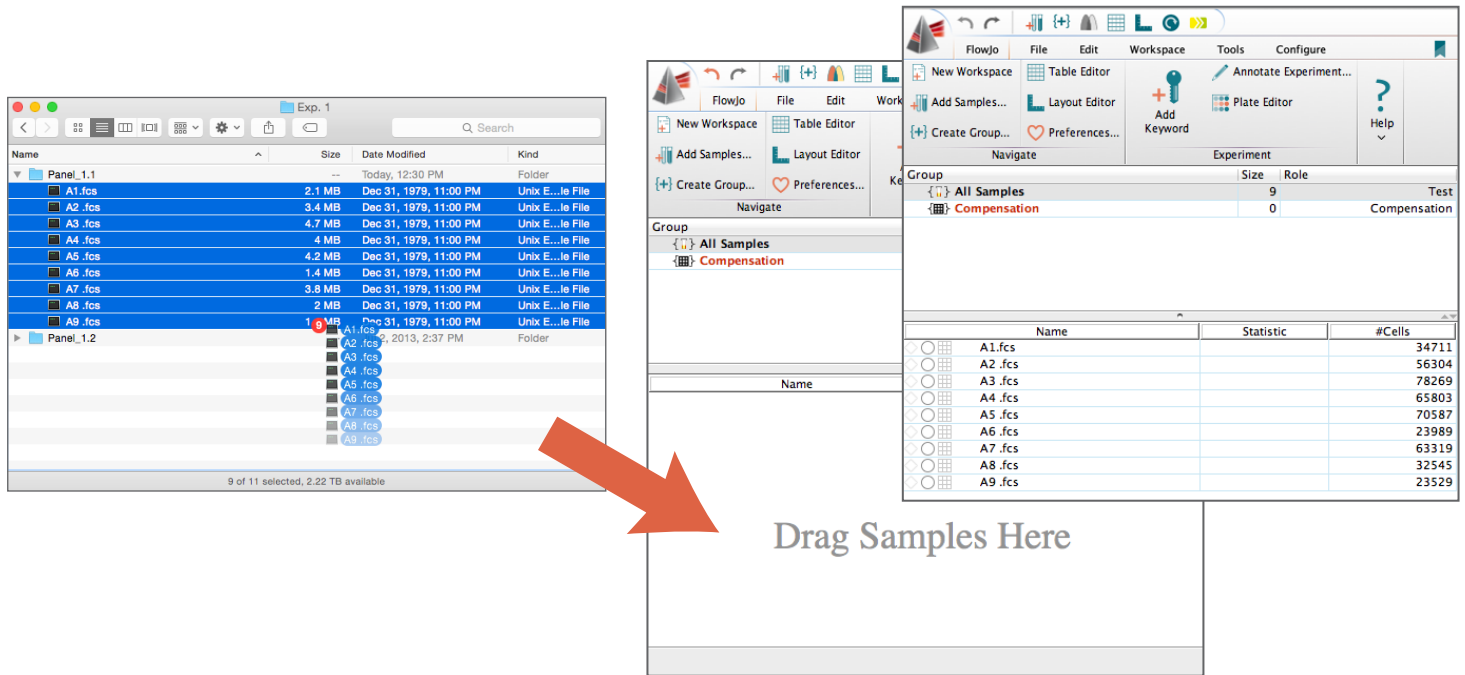
If you have a dongle (a USB drive that contains a license key) plugged into your computer, FlowJo will detect it automatically and allow you to activate the software.

For more dongle information and support, visit:

[flowjo.com/support](https://www.flowjo.com/support)

Introduction to FlowJo v10 Adding Samples to Your Workspace

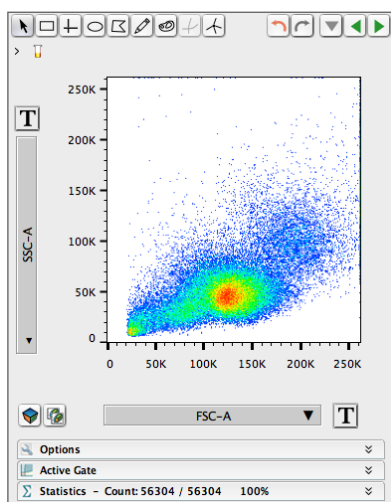
Now that you have installed FlowJo, launched the program, and agreed to the terms, locate the data files on your computer or server. To add samples, drag and drop data files into the FlowJo workspace. Or you may use the **Add Samples**  button in the FlowJo toolbar.



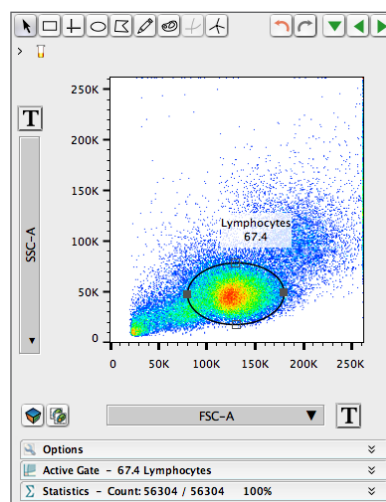
Introduction to FlowJo v10 Graph Window & Gating

Once your samples are shown in the workspace, begin by double-clicking a single sample to open the **Graph Window**, where you can create a **Gate** around the desired population.

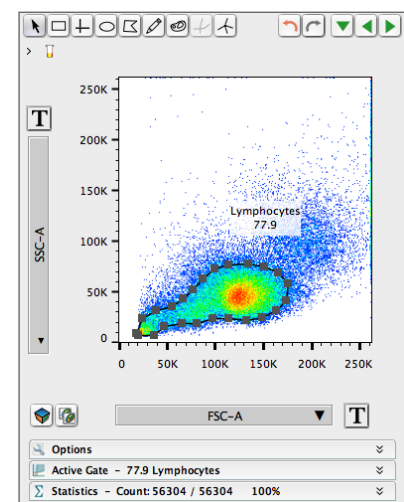
You have a choice of tools within the **Graph Window** for gating, including Rectangle, Quad, Ellipse, Polygon, Pencil, Auto Gate, Curly Quad, and Spider Gate.



Graph Window



Elliptical Gate

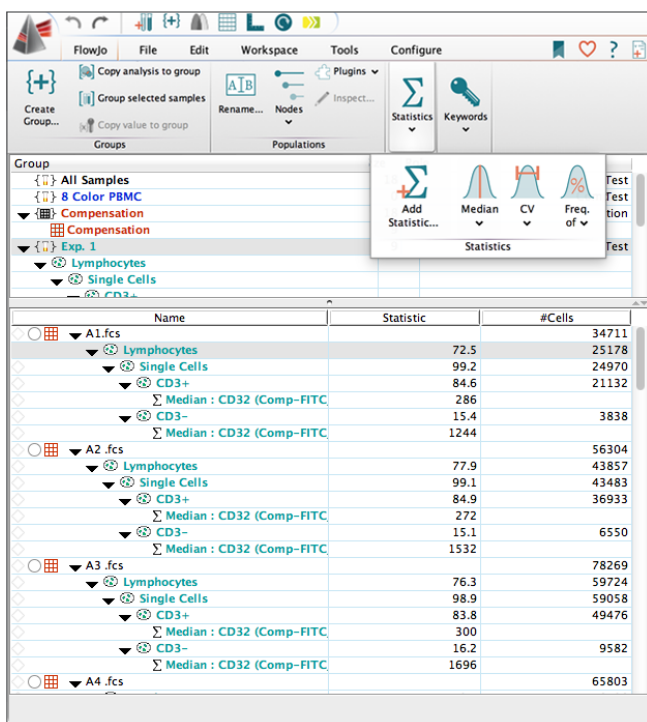


Auto Gate

For more on gating, visit:

docs.flowjo.com/d2/graphs-and-gating

To quickly add statistics to your workspace, click the appropriate icon within the **Statistics** Σ drop-down menu.



Once you have added statistics and gated the necessary populations to do your research and analyses, you can compile all your data into one simple report, which can be exported in various ways for publication and archiving.

For more about statistics, visit:

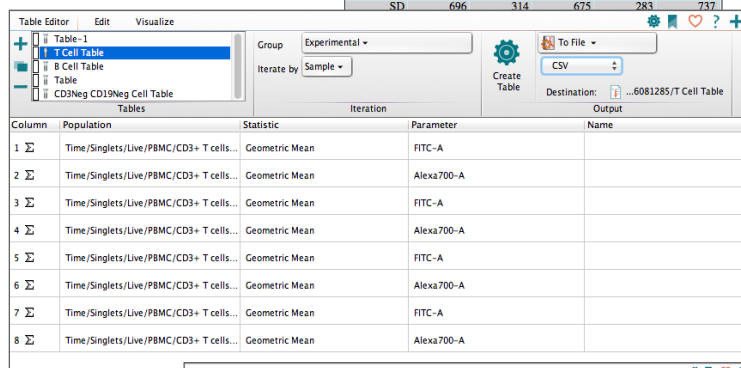
docs.flowjo.com/d2/workspaces-and-samples/ws-statistics

Creating tables and reports happens within live editors that update as you make gate adjustments or add statistics and values.

Ancestry	Time/ Singlets/ Live/ PBMC/ CD3+ T	Time/ Singlets/ Live/ PBMC/ CD3+ T	Time/ Singlets/ Live/ PBMC/ CD3+ T	Time/ Singlets/ Live/ PBMC/ CD3+ T	Time/ Singlets/ Live/ PBMC/ CD3+ T
Run 2 S...	5091	2250	3878	2381	5654
Run 2 S...	5142	2131	5797	2336	6000
Run 2 S...	6151	2365	6412	2338	6064
Run 2 S...	5400	2553	6721	3131	5303
Run 2 S...	4990	2809	6103	2806	6255
Run 2 S...	5578	2268	6125	2294	6108
Run 2 S...	5083	2615	5123	2244	4835
Run 2 S...	6299	3009	5482	2410	5254
Run 2 S...	5883	2668	5524	2219	5101
Run 2 S...	4828	2152	5656	2266	5562
Run 2 S...	4099	1918	4855	2099	4265
Run 2 S...	4542	2102	4673	2061	5023
Run 2 S...	4636	2325	5085	2389	5257
Run 2 S...	3921	2037	4651	2438	3914
Run 2 S...	4316	2188	5567	2401	5635
Run 2 S...	3673	1973	4240	2030	4004
Run 2 S...	5263	2956	6465	2793	6423
Run 2 S...	5262	2323	6338	2645	6111
Run 2 S...	5669	2607	5924	2336	5550
Run 2 S...	5539	2364	5008	1892	4410
Run 2 S...	4970	2098	5935	2395	5751
Mean	5064	2367	5598	2376	5356
SD	696	314	675	283	737

Creating **Batch Reports** Σ allows you to iterate over your data and generate analyses for many samples at once.

The **Layout Editor** Σ allows you to generate multiple types of reports for presentations and publications.



For more on iteration and creating batch reports, visit:

docs.flowjo.com/d2/graphical-reports/le-iteration

For more on creating graphical reports in the layout editor, visit:

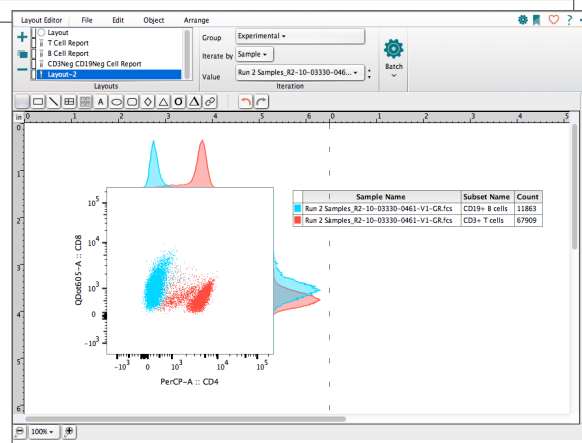
docs.flowjo.com/d2/graphical-reports

FlowJo also allows you to save your progress in a multitude of file types. For more on saving and exporting, visit:

docs.flowjo.com/d2/workspaces-and-samples/ws-savinganalysis

or

docs.flowjo.com/d2/graphs-and-gating/gw-overview/gw-export



Customer Support



Team FlowJo is here for you!

Phone: 541-201-0022 • Toll Free (U.S. only): 800-366-6045

The customer support team can be reached between 7:30 am and 4:00 pm PST*
*excluding weekends and U.S. holidays

Tech Support..... flowjosupport@bd.com

Site License Support.....flowjoportal@bd.com

Purchasing and Licensing..... flowjooffice@bd.com

Documentation docs.flowjo.com

The Cell Sort blog flowjo.com/blog

The Cell Sort newsletter flowjo.com/newsletter

FlowJo Universityflowjo.com/learn/flowjo-university

Download flowjo.com/solutions/flowjo/downloads

Free Trial flowjo.com/solutions/flowjo/free-trial

Connect with us for FlowJo news, tips, tutorials, and updates

 @flowjonow  facebook.com/flowjosoftware  youtube.com/flowjomedial

FlowJo Exchange

FlowJo Exchange offers free plugins to superpower your analysis with the most cutting edge informatics tools, including: UMAP embedding, ClassyDL, Monocle, Seurat, Box and Whisker/Violin plotting, DropOut Imputation, FlowSOM, and more.

flowjo.com/exchange

Sign up for our newsletter at flowjo.com to stay up to date with the latest updates on FlowJo Exchange and other platforms.

For Research Use Only. Not for use in diagnostic or therapeutic procedures.
BD, the BD logo, FlowJo™ and FlowJo Portal are trademarks of Becton, Dickinson and Company. © 2020. All rights reserved.

BD and FlowJo are one! Supporting you and your research from design to discovery.

bd.com

flowjo.com